

# From the industry for the industry

To every geologist, rock enthusiast & explorer

Made possible by

Gold sponsors



SveMin



Silver sponsors



KATI



MSALABS



BOLIDEN



NORSE™  
DIAMOND DRILLING

Bronze sponsors



Xploration  
PRODUCTS



radai

PALSATECH

LOVISAGRUVAN



Theia X

SGU  
Sveriges  
geologiska  
undersökning



# Exploration Newsletter

## Industry News

**District Metals** announced the intersection of strong visual polymetallic sulfide mineralization at its Tomtebo project in central Sweden. As part of its new collaboration with Boliden, the company recently completed its first joint drilling campaign for a total of 2196m. Several of the drill holes targeting the Steffenburgs zone intersected locally massive sulfide, highlighted by a 17m long interval of semi-massive to massive mineralization in drill hole TOM24-42. Follow-up BHEM surveys identified multiple in and off-hole conductors in drill holes TOM24-41 to -043, warranting further investigation. Assay results are expected in June.

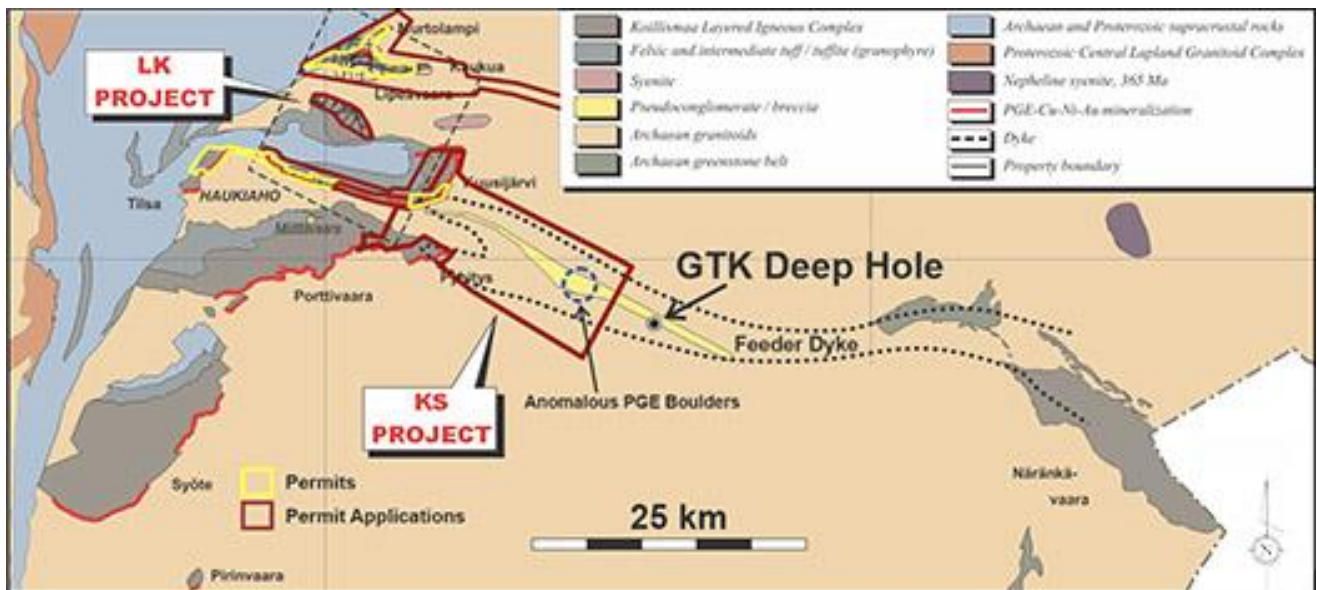


Visible sulfide mineralization in drill hole TOM24-042 (Source: [www.districtmetals.com](http://www.districtmetals.com))

## Exploration Newsletter

## Industry News

**GT Resources** reported on the latest work in the vicinity of its Kostonarvi (KS) Copper-Nickel-PGE project in northern Finland. The project hosts parts of an inferred large feeder dyke to the Koillismaa complex. While the Koillismaa complex hosts large tonnage, low-grade Ni-Cu-PGE mineralization, the feeder dyke is inferred to host more massive, high-value sulfide mineralization. Recent drill testing of inferred feeder dyke to the east of the KS project by the Finnish geological survey confirmed the occurrence of ultramafic rocks, starting at a depth of 1400m. The hole was stopped at a depth of 1724m, still within the ultramafic rock package, thus not intersecting the most prospective, basal part of the unit. Awaiting final results from additional public studies of the feeder system in the east, the company plans to conduct additional magnetotelluric surveys within its permit area, where the feeder dyke appears to come closer to surface.

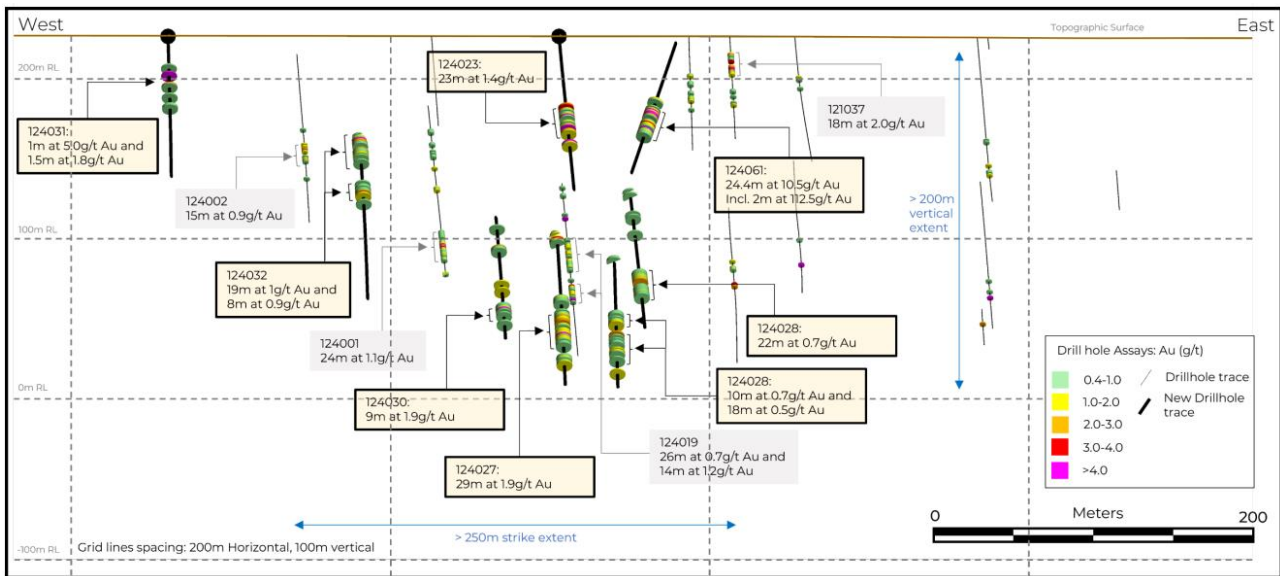


LK and KS projects in relation to the GTK drill hole and the trace of the feeder dyke (Source: [www.gtresourcesinc.com](http://www.gtresourcesinc.com))

# Exploration Newsletter

## Industry News

**Rupert Resources** reported new assay results from its winter drilling campaign at Heinä South and Ikkari. While continuing to intersect high-grade mineralization in infill drilling at Ikkari, the program was further successful in extending the mineralized zone at Heinä South to more than 250m along strike and to a depth of 200m, returning e.g. 10.5g/t Au over 24.4m, including 112.5g/t Au over 2m in drill hole #124061. In the western parts of Heinä South, gold is associated with a multi-phase sulfide breccia, whereas mineralization in the east is hosted within quartz-pyrite veins and lenses occurring in a quartz-carbonate vein stockwork. The company notes that, while the prospect has the potential to become a satellite deposit to Ikkari, more drilling is required to define a resource.

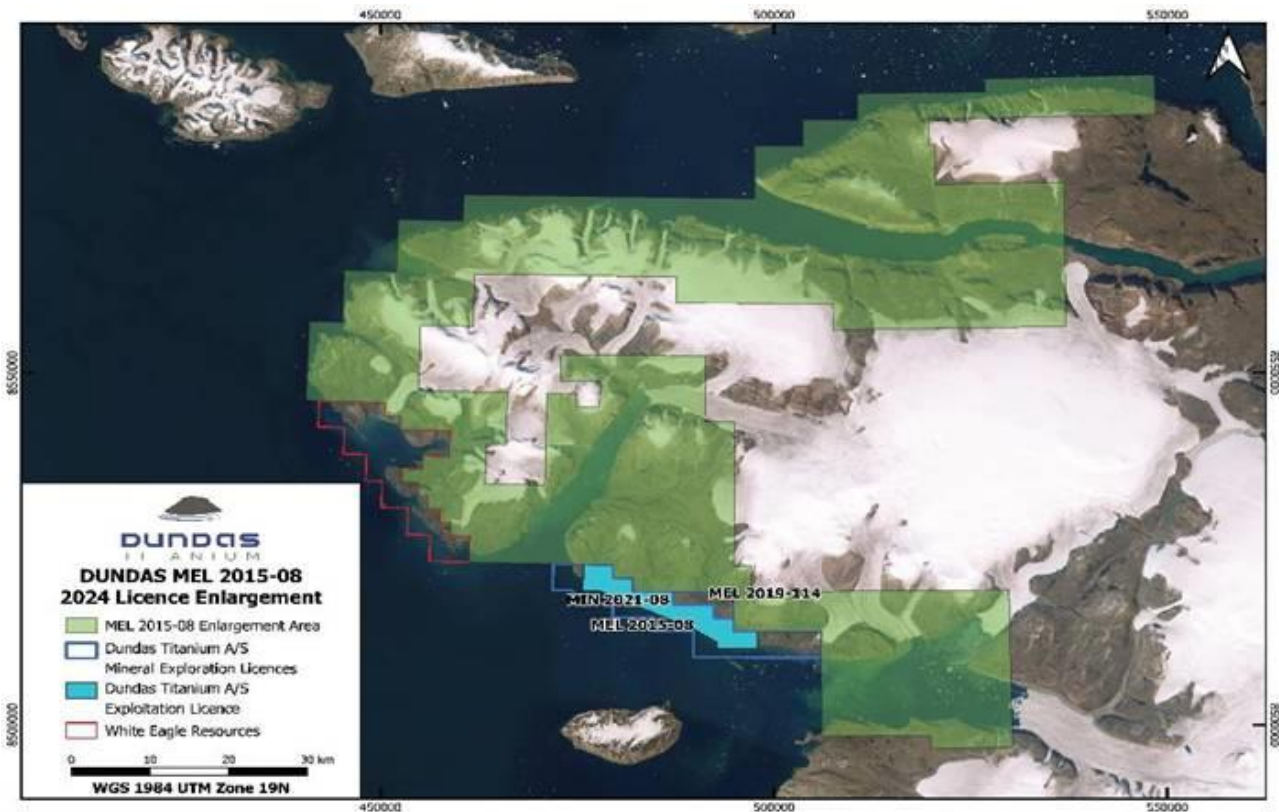


Long section with new results through the southern margin of Heinä South prospect (Source: [www.rupertresources.com](http://www.rupertresources.com))

# Exploration Newsletter

## Industry News

**Bluejay Mining** announced the acquisition of an early-stage sedimentary-hosted copper project near its Dundas Ilmenite project. Due to the project's proximity to its Dundas Ilmenite project, the company is currently filing an extension of its existing Dundas exploration license, which will, once granted increase its landholding in the area to 2833km<sup>2</sup>. The project contains several historic copper showings in a favorable geological setting with the historic Cominco Gossan showing returning 1% Cu over 34m (composite rock chip samples). For 2024, the company is planning a helicopter-supported geological reconnaissance field program.

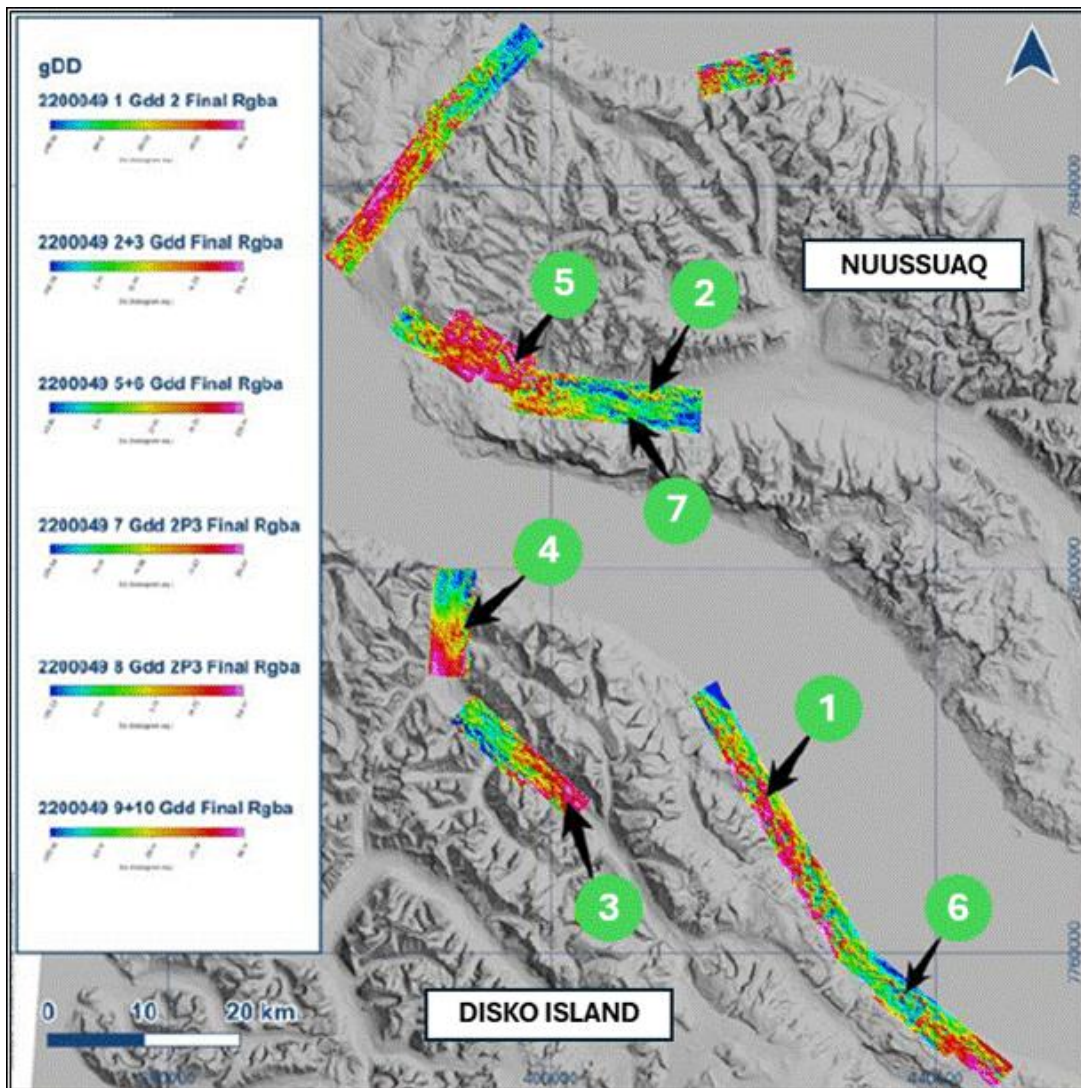


Dundas license with expanded application area (Source: [www.bluejaymining.com](http://www.bluejaymining.com))

# Exploration Newsletter

## Industry News

**Bluejay Mining** provided an update on its Disko-Nuussuaq Ni-Cu-Co-PGE project, advanced in partnership with KoBold Metals. Following a 2022 exploration campaign, extensive data analysis and interpretation, Koblots technical team identified seven high-priority gravity anomalies within the project area. In the next step, the company plans to further de-risk the targets by ground EM surveys.

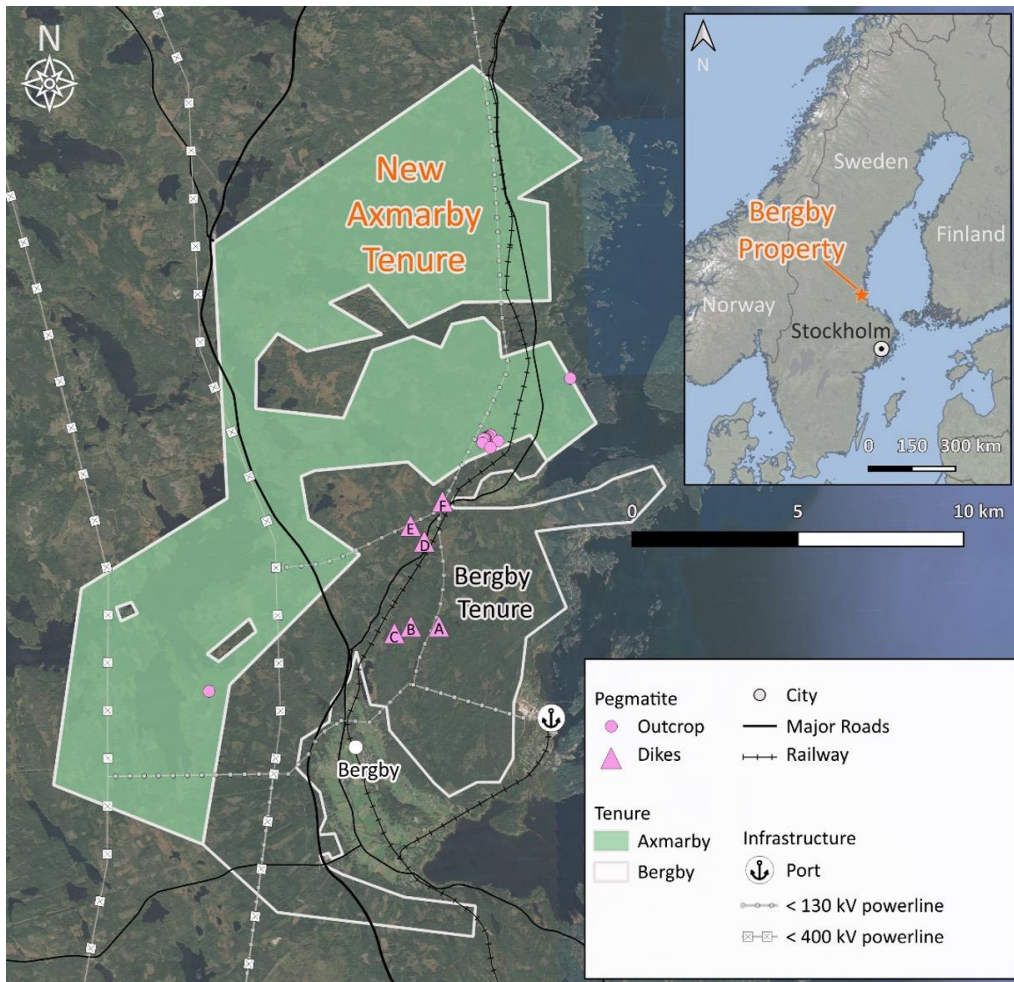


Locations of seven newly identified positive Falcon gravity anomalies (Source: [www.bluejaymining.com](http://www.bluejaymining.com))

# Exploration Newsletter

## Industry News

**United Lithium** announced the acquisition of three new projects, prospective for lithium mineralization in Finland and Sweden. The newly acquired projects cover geological terrain highly favorable to host lithium-bearing pegmatites and increase the company's landholdings in the Nordics by almost 300%. Two of the projects are located in southern Finland, whereas the third project lies directly adjacent to the company's Bergby Lithium project in central Sweden.



Newly acquired Axmarby property near Bergby, Sweden (Source: [www.unitedlithium.com](http://www.unitedlithium.com))

## Exploration Newsletter

# Industry News

On a further note, [Boliden](#) announced that an agreement has been reached, enabling the reopening of its Tara mine [and](#) that the insurance company fully assumes its part of the insurance claim following a fire at Rönnskär, [EMX Royalty](#) announced the appointment of two new members to its board of directors, [Northgold](#) announced the appointment of Seppo Tuovinen as new CEO, [Greenland Resources](#) provided an update on its Malmbjerg Molybdenum project, [Euro Battery Minerals](#) announced the submission of an environmental permit application for its Hautalampi project, [Grangex](#) announced it entered into an extension agreement until May 6<sup>th</sup> regarding the acquisition of the Sydvaranger mine and [Bastion Minerals](#) reported on historical sampling results from its newly applied for REE-Cu prospects in central Sweden.